

**FULL
TURNKEY
PACKAGE**



Winter Valley

25 sq  4  2  2  528m²

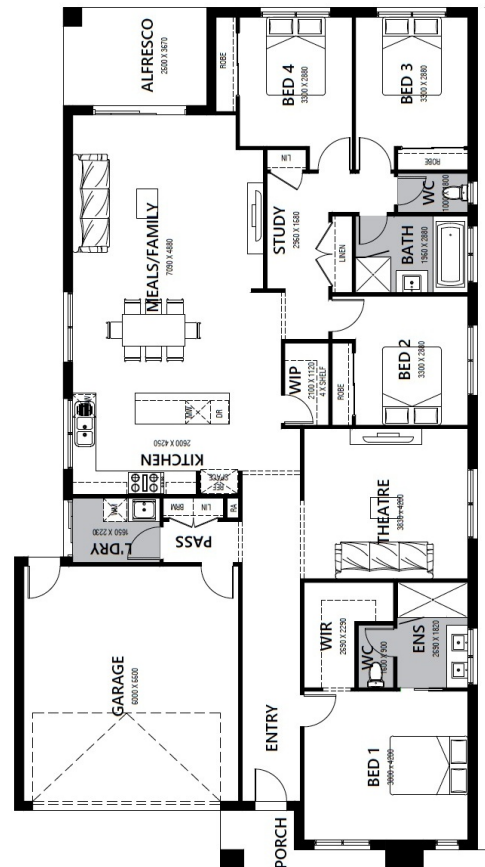
House & Land Package

Lot 811 Anglesea Road (Carrington), Winter Valley

**\$680,000 INC FHB-PREMIUM
TURNKEY Vermont 25sq**

OVER \$70K OF PREMIUM INCLUSIONS

- Front & rear landscaping
- Half share fencing & colour-through driveway
- Colorbond roof
- Flooring throughout
- Higher ceilings
- Stone benchtops to kitchen & bathrooms
- LED downlights throughout
- Modern appliances including dishwasher
- Overhead cupboards to kitchen
- Blinds throughout
- 5kW split system cooling
- Ducted heating throughout
- Zero-step tiled shower bases
- Chrome finish double towel rails and toilet roll holders
- Framed mirror or vinyl sliding doors to robes
- Brick infills over all external openings
- Remote control garage
- Window locks & flyscreens to all openable windows
- Clothesline and letter box
- NBN connection



Contact - Erin King

Mobile: 0413 148 873 | Email: erin@hlvictoria.com.au